

September 26, 2014

The Board of Commissioners of Public Utilities  
Prince Charles Building  
120 Torbay Road, P.O. Box 21040  
St. John's, Newfoundland & Labrador  
A1A 5B2

**Attention: Ms. Cheryl Blundon**  
**Director Corporate Services & Board Secretary**

Dear Ms. Blundon:

**Re: Newfoundland and Labrador Hydro - the Board's Investigation and Hearing into  
Supply Issues and Power Outages on the Island Interconnected System - Request for  
Project Updates**

Further to the Board's letter of August 1, 2014 regarding the above referenced matter, enclosed are the originals and 12 copies of Hydro's status updates for the following projects:

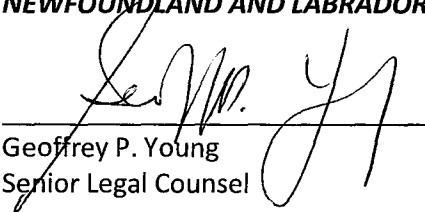
- Sunnyside Replacement Equipment; and
- Western Avalon Terminal Station T5 Tap Changer Replacement.

We trust you will find the enclosed updates to be in order.

Should you have any questions, please do not hesitate to contact the undersigned.

Yours truly,

**NEWFOUNDLAND AND LABRADOR HYDRO**

  
\_\_\_\_\_  
Geoffrey P. Young  
Senior Legal Counsel

GPY/cp

cc: Gerard Hayes – Newfoundland Power  
Paul Coxworthy – Stewart McKelvey Stirling Scales  
ecc: Roberta Frampton Benefiel – Grand Riverkeeper Labrador

Thomas Johnson – Consumer Advocate  
Danny Dumaresque

# Sunnyside Replacement Equipment

Status Update Briefing– September 26, 2014

Boundless Energy



# Contents

- Project Dashboard
- Progress & Schedule Summary
- Risk Analysis
- Project Photos

(Incremental to information provided September 12)

# Project Dashboard

**PM - Sunnyside Transformer Project**

**Joe Yurchesyn**

Safety

Quality

Schedule

Cost

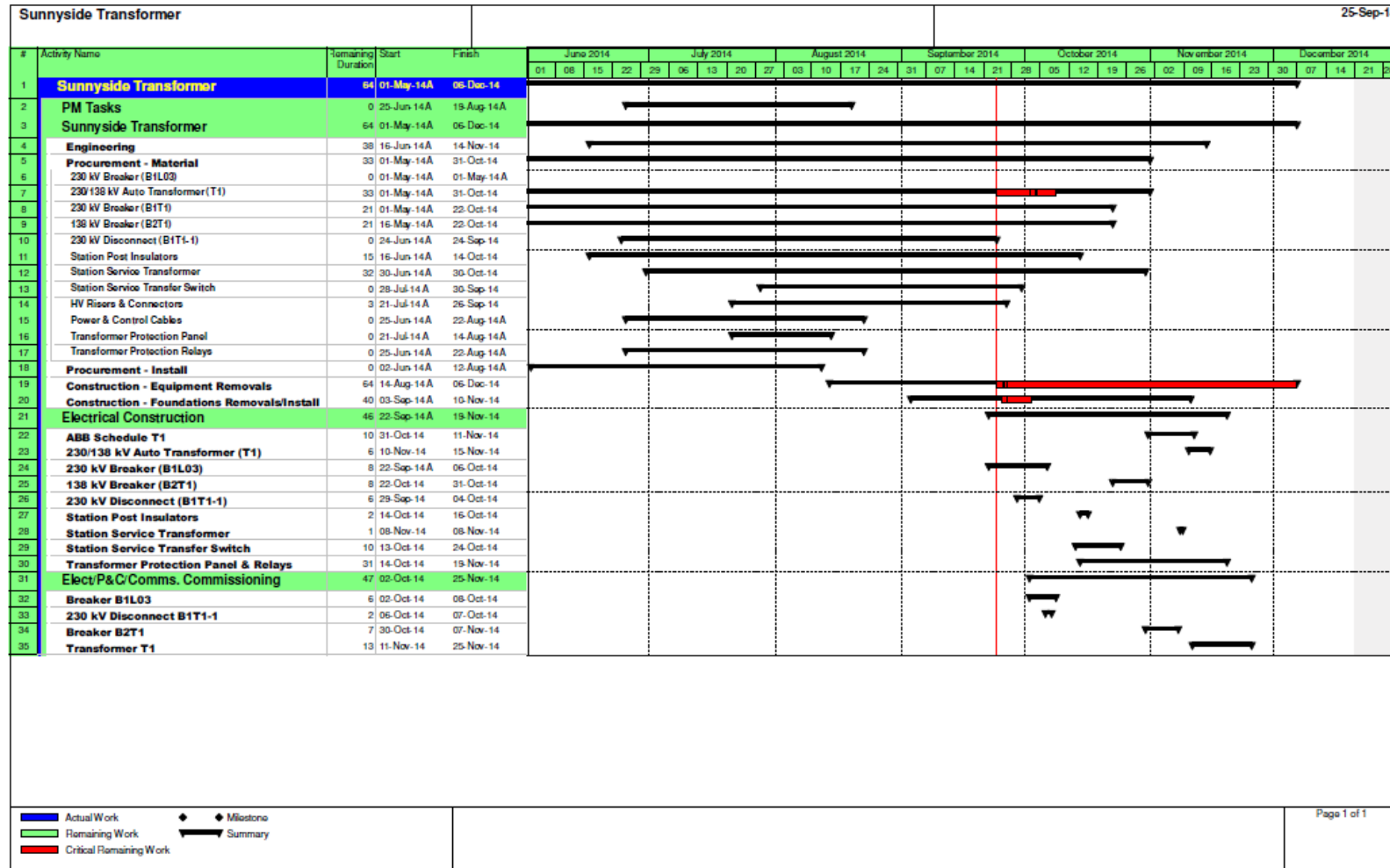
# Progress & Schedule Summary

1. T1 transformer reassembly underway.  
Delivery to site October 30. Ready for Service date maintained end of November (December 1).
2. Contractor site work started – new concrete foundations installed for B1L03 & B2T1 Breakers, B1T1-1 Disconnect and T1 Transformer.

# Progress & Schedule Summary (cont'd)

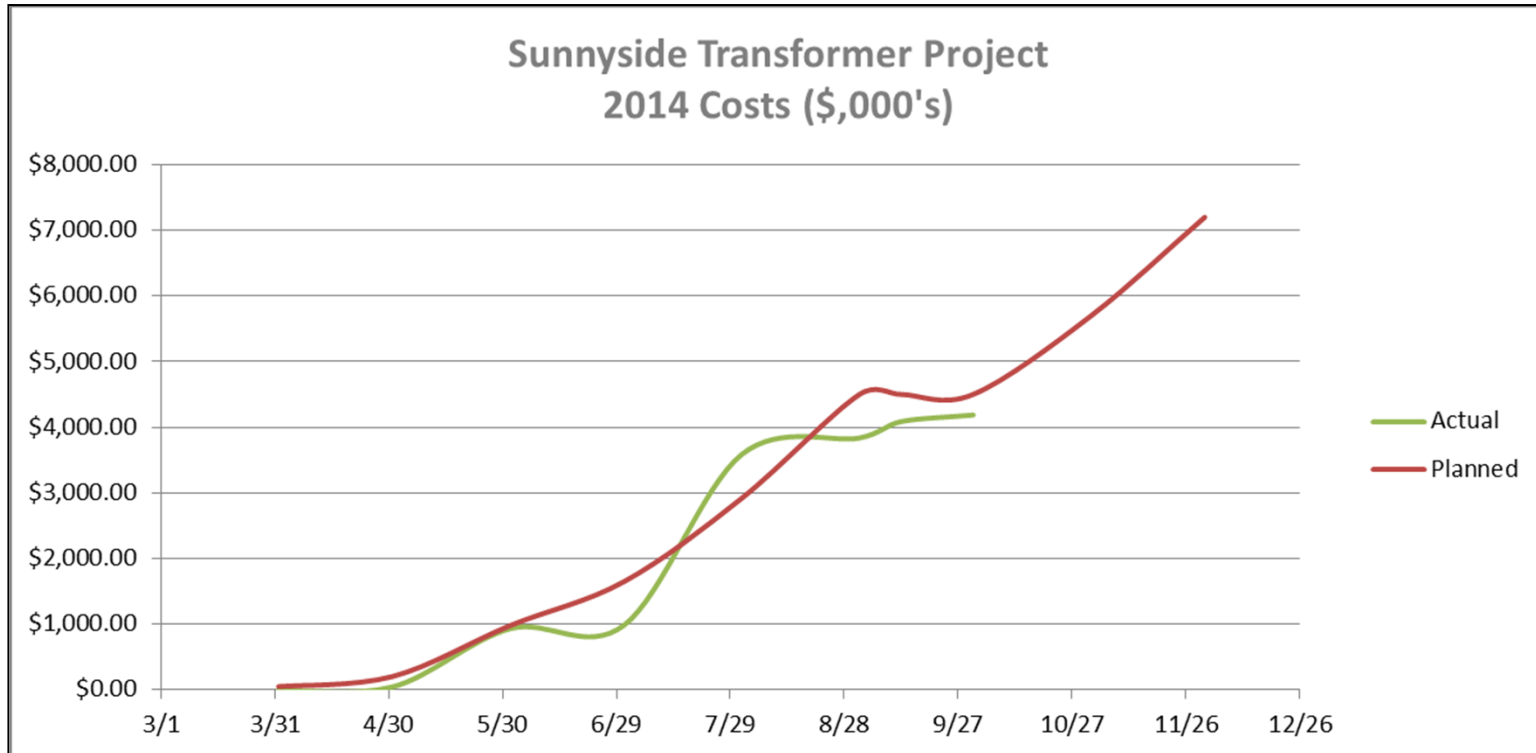
3. B1L03 230 kV Breaker installed on new concrete pad. New controls cables installed and termination of cables started.
4. New 230kV disconnect B1T1-1 on site. Start of installation September 26.
5. Overall the project continues to track with compliance to plan against Safety, Quality, Cost, and Delivery targets.

# Level 2 - Schedule Summary



# Cost Summary - S Curve

(Preliminary – Project Accounting Reconciliation in process)



Note: Forecast Final Expenditures (FFE) tracking with compliance with original budget. Actual Costs reflects contractual commitments for major equipment and install contracts.



# Risk Analysis

Third Party Facilitated Risk Workshop held July 23 and Actions Review August 7 (50+ risks and tasks identified).

Risk Register used to manage risk during Project Execution.

ABB T1 Transformer Assembly and Re-testing -  
ABB status update every two days.

# Risk Analysis – Example of Issues

- T1 Delivery – Timing, Logistics, Damage
  - ABB Transformer Assembly and Re-testing - ABB status update every two days.
- Long Lead Miscellaneous Items
  - Monitor ongoing status and expedite.
- Outage requirements.
  - Coordinate outages with other projects.

# Project Photos

# Photo 1 – 230kV Breaker (B1L03) Installed



# Photo 2 – 230kV Disconnect (B1T1-1) Foundation Installed





# Photo 3 – 230kV Disconnect (B1T1-1) Installation Underway



# Photo 4 – 138kV Breaker (B2T1) New Foundation





# Photo 5 – T1 Transformer New Foundation





